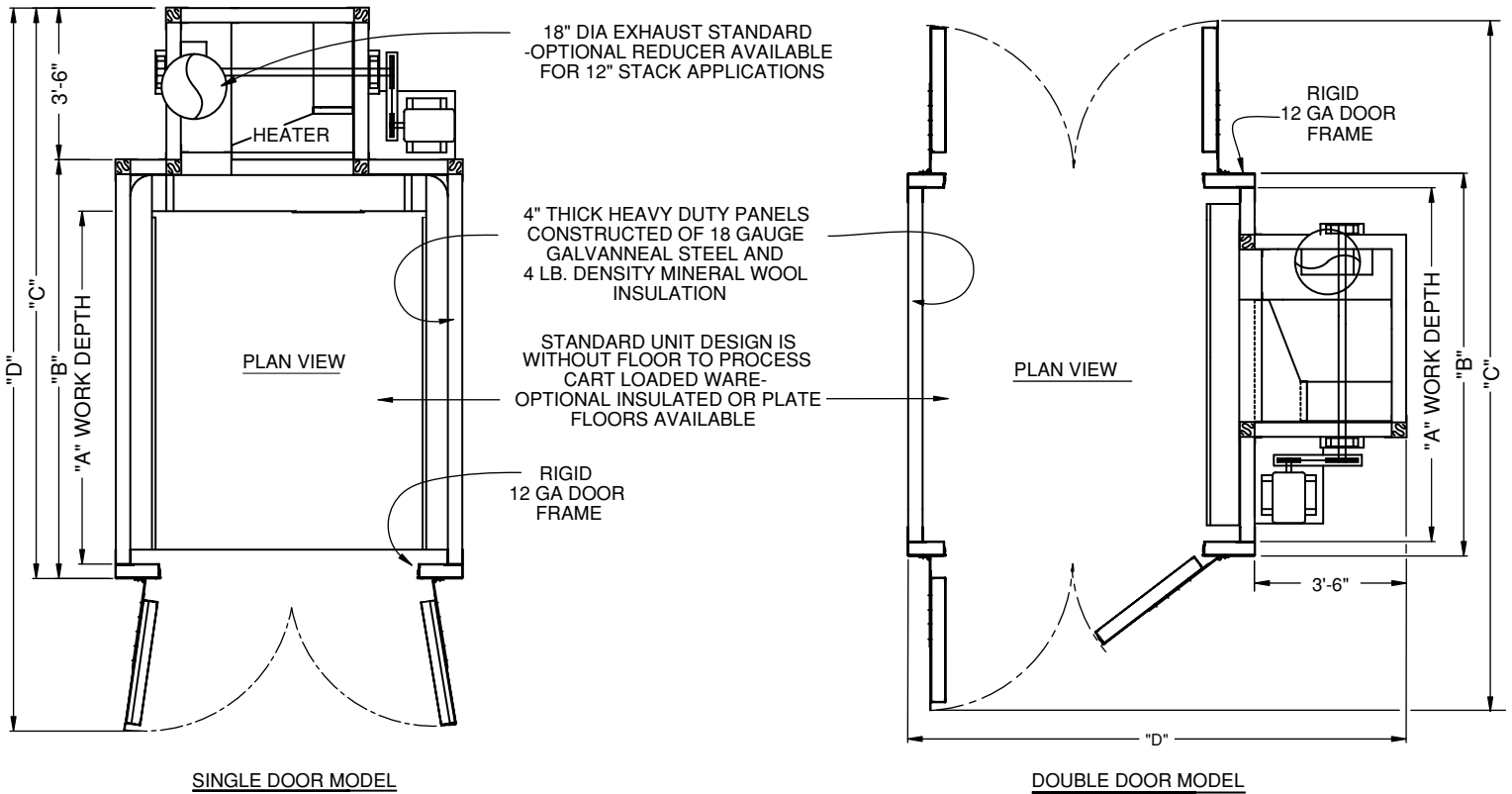




THE LEADER IN OVEN DESIGN PRESENTS...
A COMPLETE LINE OF ECONOMICAL BATCH OVENS



SINGLE DOOR MODEL

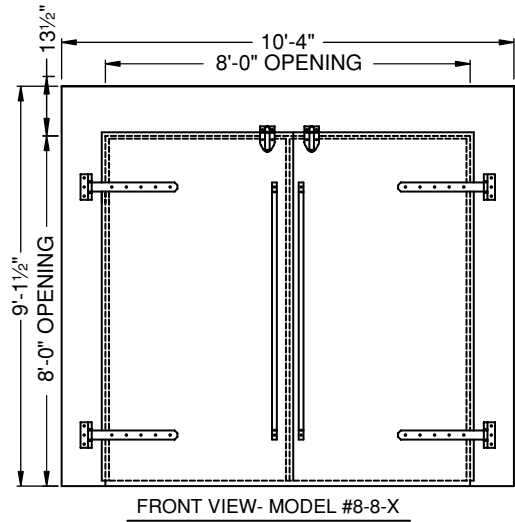
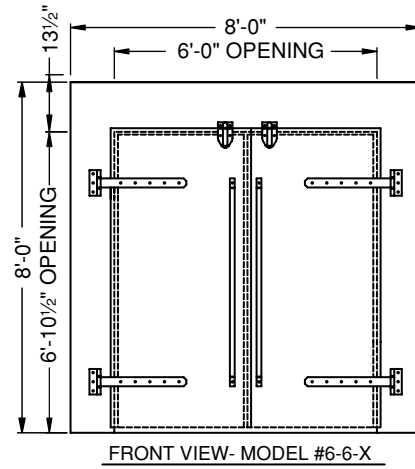
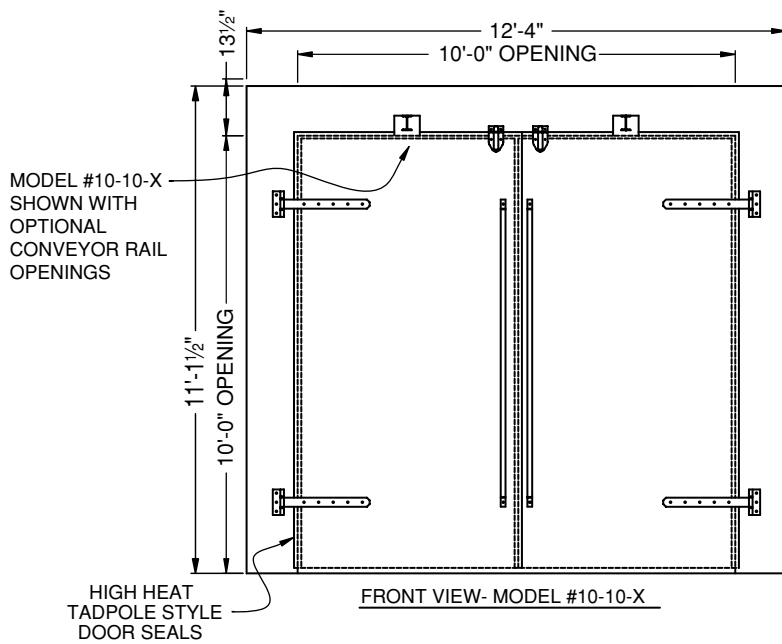
DOUBLE DOOR MODEL

SINGLE DOOR MODEL SPECIFICATIONS

MODEL # CLEAR W-H-D	MINUTES PURGE	AIR Δ'S / MIN.	MODEL DIMENSIONS				SHIPPED ASSEMBLED	OPERATING PERFORMANCE			
			"A"	"B"	"C"	"D"		OPER. TEMP	#S / HR. OF STEEL GALS/BATCH SOLVENT**		
									#6-6-X	#8-8-X	#10-10-X
#6-6-8	10 MINUTES	11.5	8'-1 3/4"	9'-8"	13'-2"	16'-8 1/4"	YES	150°	34,142	72,706	72,706
#6-6-12		8.0	12'-1 3/4"	13'-8"	17'-2"	20'-8 1/4"	YES		1.37	1.54	1.54
#6-6-16		6.1	16'-1 3/4"	17'-8"	21'-2"	24'-8 1/4"	YES	200°	18,748	41,939	41,939
#6-6-20		4.9	20'-1 3/4"	21'-8"	25'-2"	28'-8 1/4"	YES		1.21	1.30	1.30
#6-6-24		4.2	24'-1 3/4"	25'-8"	29'-2"	32'-8 1/4"	YES	250°	12,161	28,249	28,249
#6-6-28		3.6	28'-1 3/4"	29'-8"	33'-2"	36'-8 1/4"	YES		1.02	1.12	1.12
#8-8-8	15 MINUTES	13.5	8'-1 3/4"	9'-10"	13'-4"	17'-10 1/4"	YES	300°	8,257	20,660	20,660
#8-8-12		9.4	12'-1 3/4"	13'-10"	17'-4"	21'-10 1/4"	YES		.93	1.96	1.96
#8-8-16		7.2	16'-1 3/4"	17'-10"	21'-4"	25'-10 1/4"	YES	350°	5,748	15,990	15,990
#8-8-20		5.8	20'-1 3/4"	21'-10"	25'-4"	29'-0 1/4"	YES		.85	1.04	1.04
#8-8-24		4.9	24'-1 3/4"	25'-10"	29'-4"	33'-10 1/4"	YES	400°	4,326	12,848	12,848
#8-8-28		4.2	28'-1 3/4"	29'-10"	33'-4"	37'-10 1/4"	YES		.72	.64	.64
#10-10-8	15 MINUTES	8.8	8'-1 3/4"	9'-10"	13'-4"	18'-10 1/4"	PARTIAL	450°	3,037	10,459	10,459
#10-10-12		6.1	12'-1 3/4"	13'-10"	17'-4"	22'-10 1/4"	PARTIAL		.66	.52	.52
#10-10-16		4.7	16'-1 3/4"	17'-10"	21'-4"	26'-10 1/4"	PARTIAL	500°	2,253	8,852	8,852
#10-10-20		3.8	20'-1 3/4"	21'-10"	25'-4"	30'-10 1/4"	PARTIAL		.56	.40	.40
#10-10-24		3.2	24'-1 3/4"	25'-10"	29'-4"	34'-10 1/4"	PARTIAL	OPER. COST/HR* #6-6-X \$4.99			
#10-10-28		2.8	28'-1 3/4"	29'-10"	33'-4"	38'-10 1/4"	PARTIAL	OPER. COST/HR* #8-8-X \$5.08			
								OPER. COST/HR* #10-10-X \$5.08			
								* \$.60/THERM NAT. GAS			
								* \$.06/KWH ELECTRICITY			
								** AT SEA LEVEL			



GENERAL AUTOMATIC TRANSFER CO.
100 LARKIN WILLIAMS INDUSTRIAL COURT
FENTON, MO. 63026
PHONE: 636-343-6370 FAX: 636-343-6972



STANDARD FEATURES

- * 800,000 BTU ECLIPSE AIR HEAT BURNER- #6-6-X
- * 5,600 CFM @ 2" RECIRC & 885 CFM @ 3/4" EXH. - #6-6-X
- * 1.6 MBTU ECLIPSE AIR HEAT BURNER- #8-8-X & #10-10-X
- * 9,900 CFM @ 2" RECIRC & 1,360 CFM @ 3/4" EXH. - #8-8-X & #10-10-X
- * PROPORTIONAL CONTROL WITH BUTTERFLY VALVE
- * MANUAL MODE & CYCLE TIME MODE STANDARD
- * EXCLUSIVE INTEGRAL RECIRC/EXHAUST SYSTEM
- * DUAL USE - WET PAINT OR POWDER COATING
- * FACTORY PRE-FIRED & TESTED
- * U.L. LISTED CONTROL PANEL
- * F.M. APPROVED & N.F.P.A. COMPLIANT GAS TRAIN
- * 30 MAN HRS. EST. TO ASSEMBLE MODEL #10-10-X

DOUBLE DOOR MODEL SPECIFICATIONS

MODEL # CLEAR W-H-D	MINUTES PURGE	AIR Δ'S / MIN.	MODEL DIMENSIONS				SHIPPED ASSEMBLED	OPERATING PERFORMANCE			
			"A"	"B"	"C"	"D"		OPER. TEMP	#S / HR. OF STEEL		
									GALS/BATCH SOLVENT**		
#6-6-8	10 MINUTES	12.2	8'-2"	8'-10"	15'-10 1/2"	11'-6"	YES	150°	#6-6-X	#8-8-X	#10-10-X
#6-6-12		8.2	12'-2"	12'-10"	19'-10 1/2"	11'-6"	YES		34,142	72,706	72,706
#6-6-16		6.2	16'-2"	16'-10"	23'-10 1/2"	11'-6"	YES		1.37	1.54	1.54
#6-6-20		5.0	20'-2"	20'-10"	27'-10 1/2"	11'-6"	YES		18,748	41,939	41,939
#6-6-24		4.2	24'-2"	24'-10"	31'-10 1/2"	11'-6"	YES		1.21	1.30	1.30
#6-6-28		3.6	28'-2"	28'-10"	35'-10 1/2"	11'-6"	YES		12,161	28,249	28,249
#8-8-8	15 MINUTES	14.4	8'-2"	8'-10"	17'-10 1/2"	13'-10"	YES	250°	1.02	1.12	1.12
#8-8-12		9.7	12'-2"	12'-10"	21'-10 1/2"	13'-10"	YES		8,257	20,660	20,660
#8-8-16		7.3	16'-2"	16'-10"	25'-10 1/2"	13'-10"	YES		.93	1.96	1.96
#8-8-20		5.9	20'-2"	20'-10"	29'-10 1/2"	13'-10"	YES		5,748	15,990	15,990
#8-8-24		4.9	24'-2"	24'-10"	33'-10 1/2"	13'-10"	YES		.85	1.04	1.04
#8-8-28		4.2	28'-2"	28'-10"	37'-10 1/2"	13'-10"	YES		4,326	12,848	12,848
#10-10-8	15 MINUTES	9.7	8'-2"	8'-10"	19'-10 1/2"	15'-10"	PARTIAL	400°	.72	.64	.64
#10-10-12		6.5	12'-2"	12'-10"	23'-10 1/2"	15'-10"	PARTIAL		3,037	10,459	10,459
#10-10-16		4.9	16'-2"	16'-10"	27'-10 1/2"	15'-10"	PARTIAL		.66	.52	.52
#10-10-20		3.9	20'-2"	20'-10"	31'-10 1/2"	15'-10"	PARTIAL		2,253	8,852	8,852
#10-10-24		3.3	24'-2"	24'-10"	35'-10 1/2"	15'-10"	PARTIAL		.56	.40	.40
#10-10-28		2.8	28'-2"	28'-10"	39'-10 1/2"	15'-10"	PARTIAL		OPER. COST/HR* #6-6-X	\$4.99	
								OPER. COST/HR* #8-8-X	\$5.08		
								OPER. COST/HR* #10-10-X	\$5.08		
								* \$.60/THERM NAT. GAS			
								* \$.06/KWH ELECTRICITY			
								** AT SEA LEVEL			

CONTACT G.A.T. FOR: BATCH OVENS, BELT WASH / DRY UNITS OR CUSTOM DESIGNED PAINT & POWDER FINISHING SYSTEMS AND COMPONENTS

CHECK US OUT ON THE WEB...
www.gatco.cc